

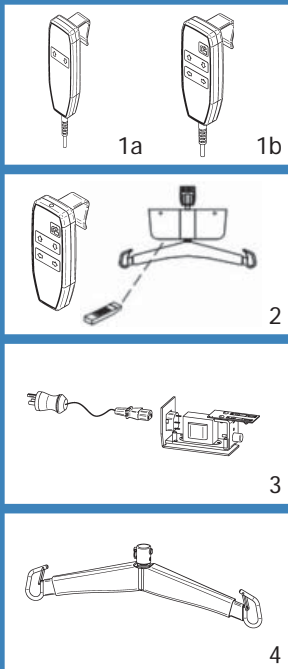
Ceiling Lift - Fixed

# PRODUCT	DESCRIPTION	MARKET
#ALB3-2FB	Voyager 420 / 2 Way - BHM Track	NORTH AMERICA
#ALB3-4FB	Voyager 420 / 4 Way - BHM Track	NORTH AMERICA
#9850008	Voyager 420 / 4 Way - BHM Track	EUROPE & UNITED KINGDOM
#ALB3-2FB-AU	Voyager 420 / 2 Way - BHM Track	AUSTRALIA
#ALB3-4FB-AU	Voyager 420 / 4 Way - BHM Track	AUSTRALIA



Voyager 420

Lifting capacity :
420 lb / 190 kg / 29.92 st



√ = Included / 0 = Optional

# PART	DESCRIPTION	#ALB3-2FB	#ALB3-4FB	#9850008	#ALB3-2FB-AU	#ALB3-4FB-AU
1a	#A0093 Hand Control - 2 Way	√			√	
1b	#A0086 Hand Control - 4 Way		√	√		√
2	#A5400-V420 Wireless Kit (I.R. Control)		0	0		0
3	#A5300 Charger assembly - BHM Track - North America	√	√			
3	#A5300-CE/UK Charger assembly - BHM Track -Europe & United Kingdom			√		
3	#A5300-AU Charger assembly - BHM Track -Australia				√	√
4	#A5465 Carry Bar	√	√	√	√	√

	Hammock & Hammock 6	Hygienic	Quick Fit	Band	Chest	Total transfer	Combi	Repositioning	Bariatric	Walking	Soft	Universal	Margue
	Slings										Stretchers		
SUGGESTED SLINGS & STRETCHERS	√	√	√				√	√		√	√		√

(For more details, look into the Sling Section)

FEATURES

Weight	12.7 kg / 28 lb / 2 st
Lifting capacity	190 kg / 420 lb / 29.92 st
Soft start & stop movement	
Return to charge function on handset	Lift cannot return to charger with load

SAFETY FEATURES

Emergency lowering device	Manual & electric
Emergency brake	Prevent free fall
Emergency Stop Pull Cord	

TECHNICAL SPECIFICATIONS

CSA, UL & CE approved	
Vertical displacement speed	4 cm/sec (1.6 in/sec)
Horizontal displacement speed	20 cm/sec (7.9 in/sec)

BATTERY SPECIFICATIONS

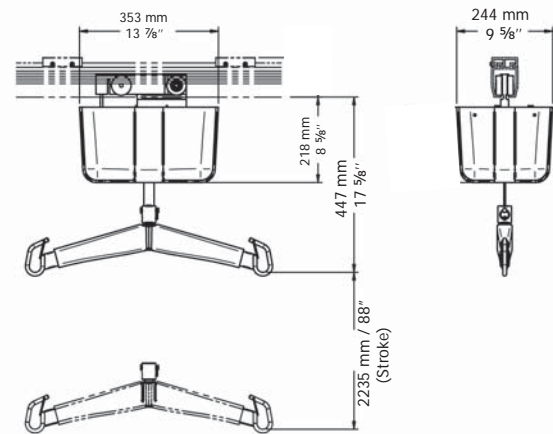
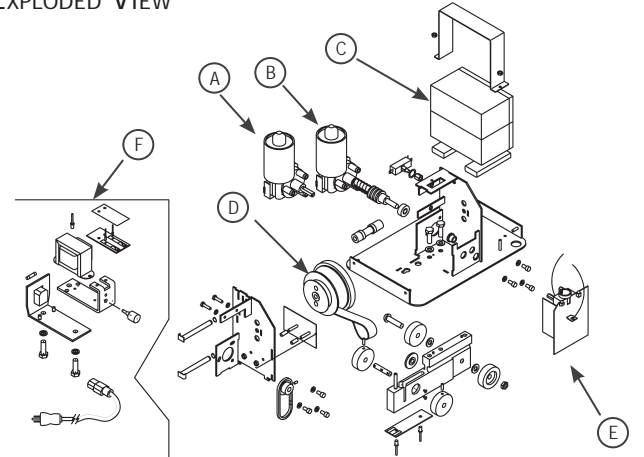
Rechargeable sealed lead acid	(2X) 12VDC, 7Ah
Battery capacity with load of 75 kg / 165 lb / 11.81	Up to 150 transfers
Low battery warning indicator - Visual & audible	
Charge input - 120 Vac, 50-60 Hz, 0.5 A max. // 240 Vac, 50-60 Hz, 0.25 A max	
Charge indicator - Visual	

STRAP SPECIFICATIONS

Length	2.2 m (88 in)
Automatically stops unit if twisted	
Tested for 1363.5 kg / 3000 lb / 214.8 st	

UNIT CONSTRUCTION

Frame - high strength rolled steel zinc plated	
Cab - fire retardant plastic	

DIMENSIONS

EXPLODED VIEW

COMMON SPARE PARTS

A	#E0006	Motor - Vertical
B	#E0006	Motor - Horizontal
C	#E0150 (X2)	Battery
D	#A1360	V420 Strap
E	#E8500-4FB	Circuit Board V420
F	#A5300	Charger assembly - BHM Track - North America
F	#A5300-CE/UK	Charger assembly - BHM Track - Europe & United Kingdom
F	#A5300-AU	Charger assembly - BHM Track - Australia

ACCESSORIES

G	#700.00510	Scale Unit (North America & Australia)
G2	#700.00530	Scale Unit - Class III (Europe & United Kingdom)

ACCESSORIES
